

REPORT TO COUNCIL



Date: November 23, 2011
File: 1310-30
To: City Manager
From: Architecture Planner
Subject: 2012 Age-Friendly Community Planning & Project Grants
- Parkinson Recreation Centre Enabling Garden

Recommendation:

THAT Council receives, for information, the report from the Architecture Planner dated November 23, 2011, with respect to 2012 Age-Friendly Community Planning & Project Grants - Parkinson Recreation Centre Enabling Garden;

AND THAT Council endorses the Parkinson Recreation Centre Enabling Garden for the 2012 Age-Friendly Community Planning and Project Grant Application administered through the UBCM's Senior's Housing & Support Initiative;

Purpose: A Council Resolution is required for the City to make application for the 2012 Age-Friendly Community Planning and Project Grant.

Background:

The Seniors' Housing and Support Initiative has announced a grant opportunity for community planning and/or community projects focused on age-friendly communities and the ability of seniors to age in place. The applications should demonstrate a commitment to the following guiding principles:

- Community Driven - Community solutions are based on local priorities;
- Catalyst for Action - Community planning activities are catalysts that enable local governments and community partners to enhance and improve services for older adults;
- Focus on Key Priorities - Activities are focused on key priorities with focused outcomes;
- Flexible - Required actions differ in each community;
- Coordinated - Activities on different levels of government and community partners are coordinated to avoid duplication amongst programs and projects; and
- Sustainable Results - Community planning activities contribute to improving the lives of older adults over time.

All funded activities are to take place within the 2012 calendar year.

A handwritten signature in blue ink, appearing to be a stylized name or initials.

Eligible activities include new community planning and/or community projects that are undertaken by a local government and that address the guiding principles and funding priorities of the program, including projects or activities that focus on one or more of the following:

- Outdoor spaces and building;
- Transportation (including traffic safety);
- Housing;
- Respect and social inclusion;
- Social participation;
- Communications and information;
- Civic participation and employment; and
- Community support and health services.

Examples of Community projects that would be considered suitable include:

- Fitness / recreation;
- Community gardens and healthy eating;
- Health literacy and health promotion (e.g. workshops, guides, etc.);
- Referral and support to link seniors with health and recreation opportunities;
- Chronic disease prevention;
- Injury prevention and community safety (including traffic safety); and
- Intergenerational projects.

Staff are recommending that an Enabling Garden / Community Garden at the Parkinson Recreation Park, adjacent to the new Multi-Age Activity Centre to be built in 2012, is the best project to put forth for this grant opportunity.

An Enabling Garden is a multi-use garden designed for the entire community, but with a focus on those in the community with physical and cognitive disabilities. The concept of an enabling garden began in the City of Guelph in 1999 to provide garden facilities for members of the community with the following attributes:

- Accessibility;
- Sensory interest (sight, sound, smell, touch);
- Reflective areas as with any garden; and
- Active programming so the experience of gardening is made available to all segments of the population

Source: (<http://www.enablinggarden.org/index.htm>). Photograph of an enabling garden is provided as Attachment 1.

The Enabling Garden at the Parkinson Recreation Centre would provide opportunities for the creation of community gardening programs for youth, those with physical and cognitive disabilities and the elderly. The program would be operated through a partnership with the City of Kelowna and the Central Okanagan Community Gardens Society (COCG) and the City in the operation and maintenance of the garden to provide programs for community groups. A location plan of the proposed site of the Enabling Garden is provided as Attachment 2 to this report.

Financial/Budgetary Considerations:

The maximum grant available is \$20,000 and matching funds are not required. The City is requesting \$20,000 to put towards the overall costs of the project, estimated at \$25,000. Staff are in the process of confirming the contribution of materials and labour from community groups for the construction of the project including;

- Wood for the planter beds;

- Soil for the planter beds; and
- Labour for the construction of the garden.

External Agency/Public Comments:

The project is supported by both the COCG and the Water Street Senior Centre. A letter of support from COCG has been received (see Attachment 3).

Internal Circulation:

Director, Recreation and Culture
Manager, Grants
Manager, Parks and Public Space Projects
Manager, Parks Services
Landscape Design Technician, Parks Services

Considerations not applicable to this report:

Personnel Implications:
Legal/Statutory Authority:
Legal/Statutory Procedural Requirements:
Existing Policy:
Communications Comments:
Alternate Recommendation:

Submitted by:



K. Bouw, Architecture Planner

Approved for inclusion:

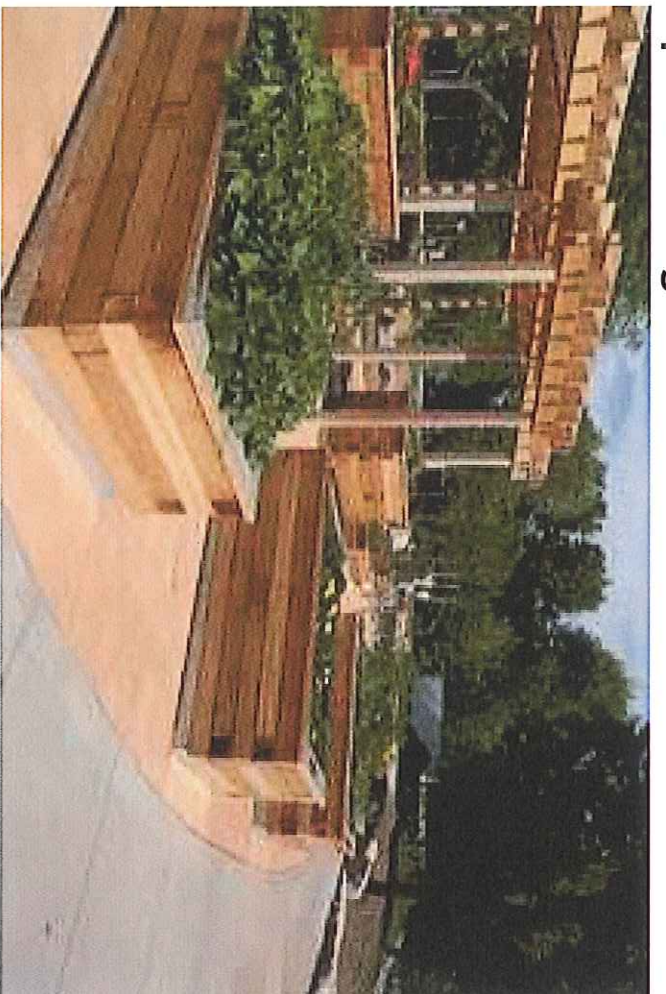


R. Cleveland, Director, Infrastructure Planning

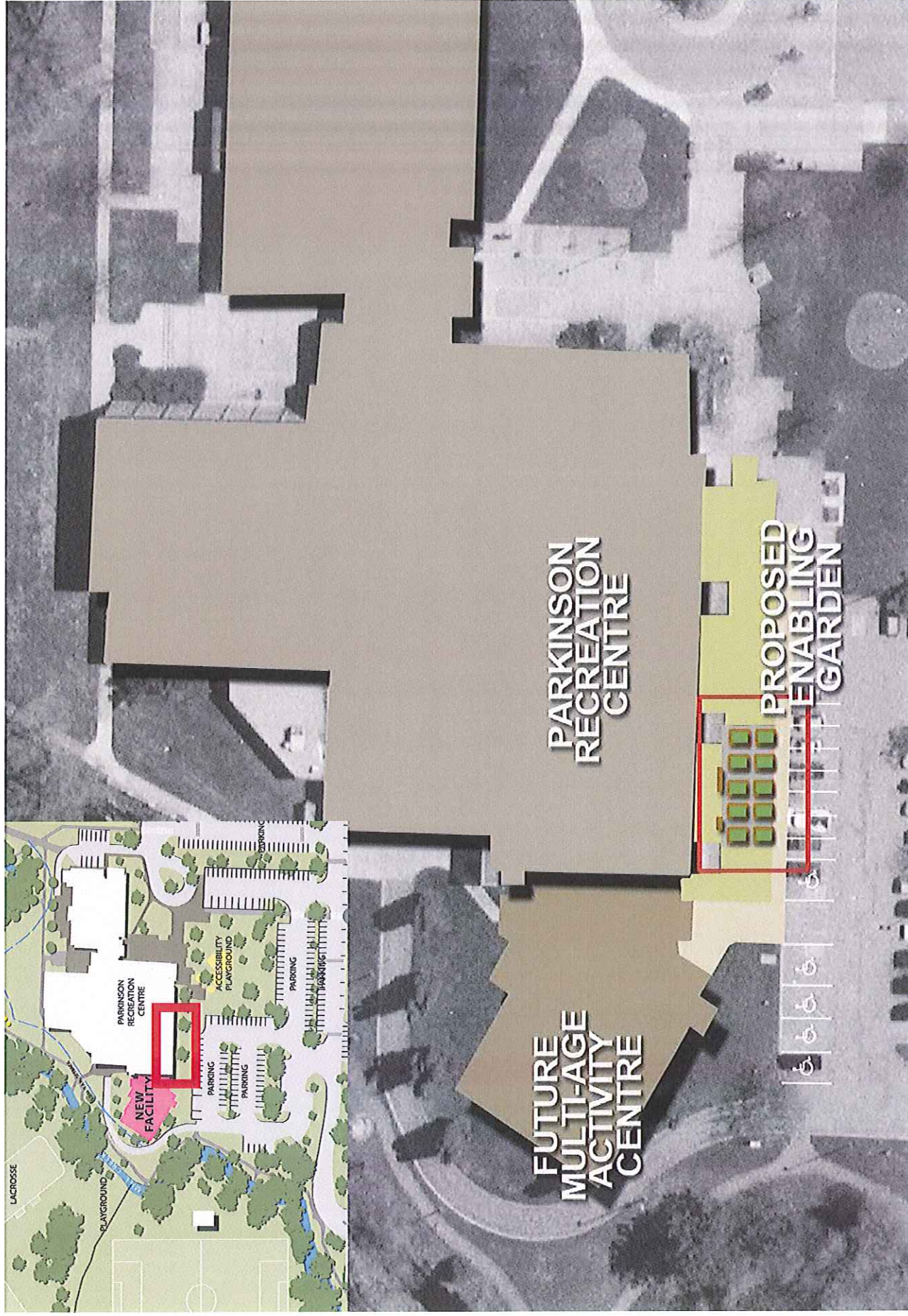
Attachments: 1: Photographs of Enabling Garden
2: Location Plan for Parkinson Recreation Centre's Enabling Garden
3: Letter of Support from COCG Society

cc: General Manager, Community Sustainability
Director, Civic Operations
Director, Communications
Director, Recreation & Cultural Services

ATTACHMENT 1: Images from Guelph Enabling Garden



ATTACHMENT 2: Location Plan for Enabling Garden at Parkinson Recreation Centre





November 22, 2011

To Whom It May Concern:

Central Okanagan Community Gardens Society (COCG) lends their support to the development of a community garden at the Parkinson Recreation Centre.

Not only does the site meet the criteria needed for a successful garden, such as proximity to high density development, it also has potential to become a premier educational garden due to its' high visibility. We have no doubt that a CG in this area will thrive, as the long waiting lists at neighbouring Sutton Glen, Lindahl and Barlee prove the need for more plots.

If the City of Kelowna Parks Division is successful in receiving the grant requested, COCG is willing to work with them to develop and then manage a community garden at the new Parkinson Activity Centre/Parkinson Recreation Centre.

Sincerely,

A handwritten signature in black ink that reads "Becky Vien". The signature is written in a cursive, flowing style.

Becky Vien
Secretary
COCG

www.centralokanagancommunitygardens.com

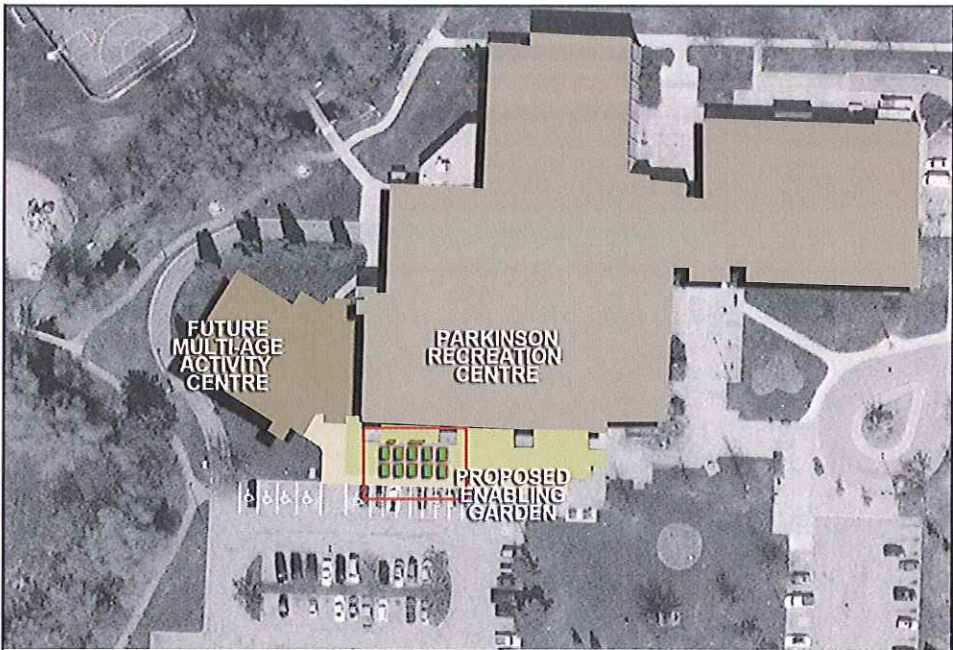
PARKINSON RECREATION CENTRE ENABLING GARDEN

2012 Age-Friendly Community Planning & Project Grant

A collage of four smaller photographs showing people engaged in activities at the garden. The top-left photo shows a person in a wheelchair tending to plants in a raised bed. The top-right photo shows a group of people sitting on the ground, possibly participating in a community event. The bottom-left photo shows a view of the garden beds near a body of water. The bottom-right photo shows two people in wheelchairs walking along a paved path. The City of Kelowna logo is in the top right corner of this section.

Images from Guelph Enabling Garden

kelowna.ca



Site Location Plan

kelowna.ca